

1-4X

K-10

STATE OF OHIO
DEPARTMENT OF HIGHWAYS
GEA-700-(1.44)(3.85)
GEAUGA COUNTY
TROY TOWNSHIP

FED. RD. DIVISION	STATE	PROJECT	FISCAL YEAR
2	OHIO	H.I.F.	1953

GEAUGA COUNTY
GEA. - 700-(1.44)(3.85)

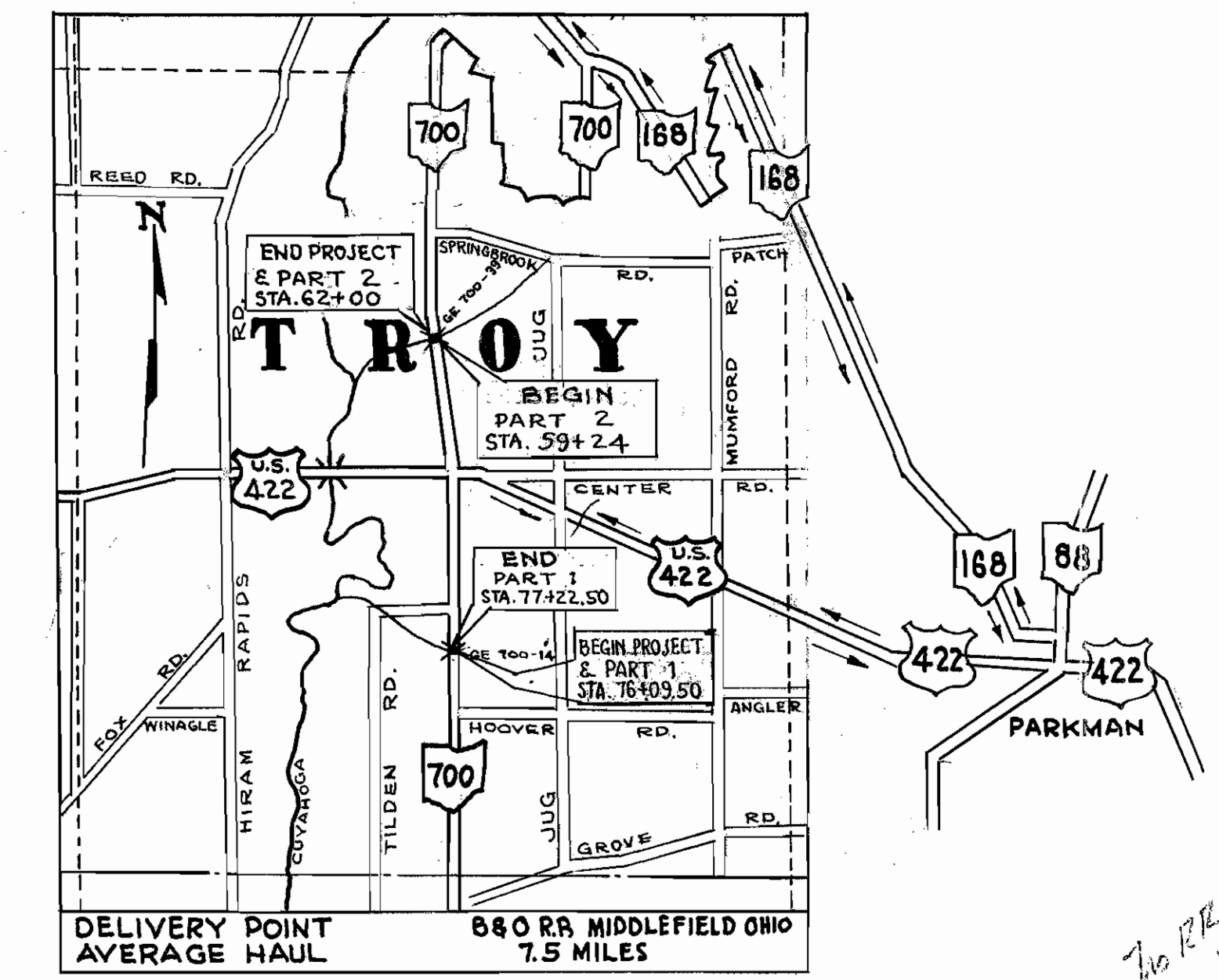
1
10

CONVENTIONAL SIGNS

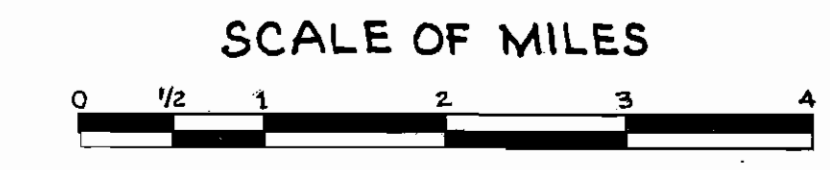
CORPORATION LINE _____
CENTER LINE _____
TOWNSHIP LINE _____
RAILROAD _____

INDEX OF SHEETS

TITLE SHEET	1
PAVEMENT CALCULATIONS, GENERAL NOTES & SUMMARY	2
PART ONE	
PLAN & PROFILE	3
STRUCTURE OVER 20' SPAN	4-6
PART TWO	
PLAN & PROFILE	7
STRUCTURE OVER 20' SPAN	8-10



LOCATION PLAN



PORTION TO BE IMPROVED
STATE HIGHWAYS
OTHER HIGHWAYS
DETOURS (PART 2)

SCALES

PLAN 1" = 20'
PROFILE VER. 1" = 10'
PROFILE HOR. 1" = 20'

LINE DATA

BEGIN PROJECT AND PART ONE	STA. 76+09.50
END PART ONE	STA. 77+22.50
TOTAL LENGTH PART ONE	113.00 ft. = 0.021 miles
BEGIN PART TWO	STA. 59+24
END PROJECT AND PART TWO	STA. 62+00
TOTAL LENGTH OF PART TWO	276 ft. = 0.052 miles
TOTAL LENGTH OF PROJECT	389 ft. = 0.073 miles
WORK DATA	
BEGIN WORK PART ONE	STA. 75+36
END WORK PART ONE	STA. 77+93
TOTAL LENGTH PART ONE	257 ft. = 0.048 miles
BEGIN WORK PART TWO	STA. 59+24
END WORK PART TWO	STA. 62+00
TOTAL LENGTH PART TWO	276 ft. = 0.052 miles
TOTAL NET LENGTH OF WORK	533 ft. 0.100 miles

STANDARD DRAWINGS			
G-7.07	1-2-53	AS-3-47 AS-4-47	7-27-49
T-35	10-1-52	SB-1-47	1-20-48
L-3	4-1-50		
L-3 A	4-1-50		
S-27 P.C.2	3-15-48		
F-123A & S	2-20-45		
T-15 No 1	2-2-53		
T-15 No 2	2-2-53		
L-1	4-1-50		

SUPPLEMENTAL SPECIFICATIONS			
T-171.19	Rev. 3-19-53		
M-101.7	1-24-53		
CE-107	5-21-53		

The standard specifications of The State of Ohio Department of Highways, including changes and supplemental specifications listed in the proposal shall govern this improvement.

I hereby approve these plans and declare that the making of this improvement will require the closing of a part of the highway to traffic and detours will be provided as indicated on the plans. Provisions for the maintenance and safety of traffic on the remainder of the project will be as set forth on the plans and estimates.

The right of way for this improvement will be provided by the State of Ohio.

Approved Louis L. Drasler
Date 6-2-53 Division Deputy Director

Approved _____
Date _____ Chief Engineer, Bureau of Maintenance

Approved John J. Heier
Date 6-17-53 Chief Engineer, Bureau of Planning & Programming

Approved Richard Orth
Date 6-16-53 Chief Engineer, Bureau of Bridges & R.R. Crossing

Approved W. J. Schaefer
Date 6-18-53 Chief Engineer, Bureau of Location & Design

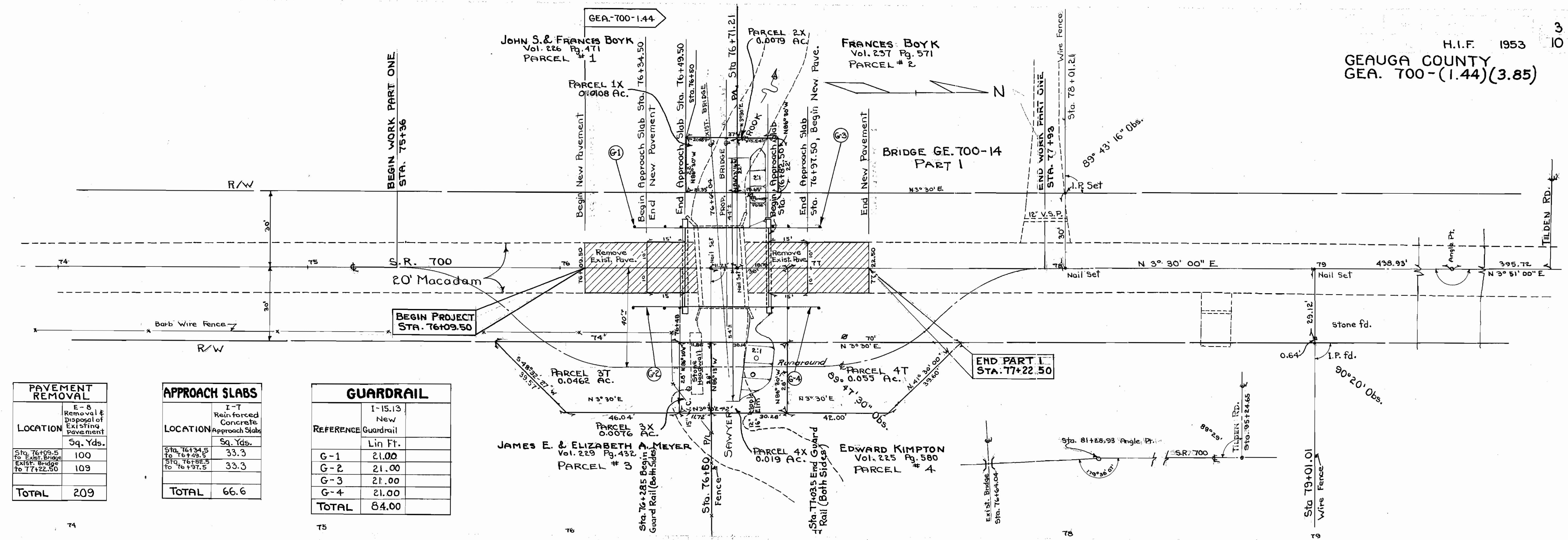
Approved V. J. Schaefer
Date 6-20-53 First Asst. Director & Chief Engineer

Approved W. J. Schaefer
Date 6-22-53 Director of Highways

CONSTRUCTION
BUREAU
APR 6 1956
GROUND PHOTO LAB

FILE NO.	GEA. - 700-(1.44)(3.85)
	GEAUGA COUNTY TROY TOWNSHIP
	DATE OF LETTING 195
	CONTRACT NO.

1144



PAVEMENT REMOVAL	
LOCATION	Sq. Yds.
Sta. 76+09.50 to 76+22.50	100
Sta. 76+22.50 to 77+22.50	109
TOTAL	209

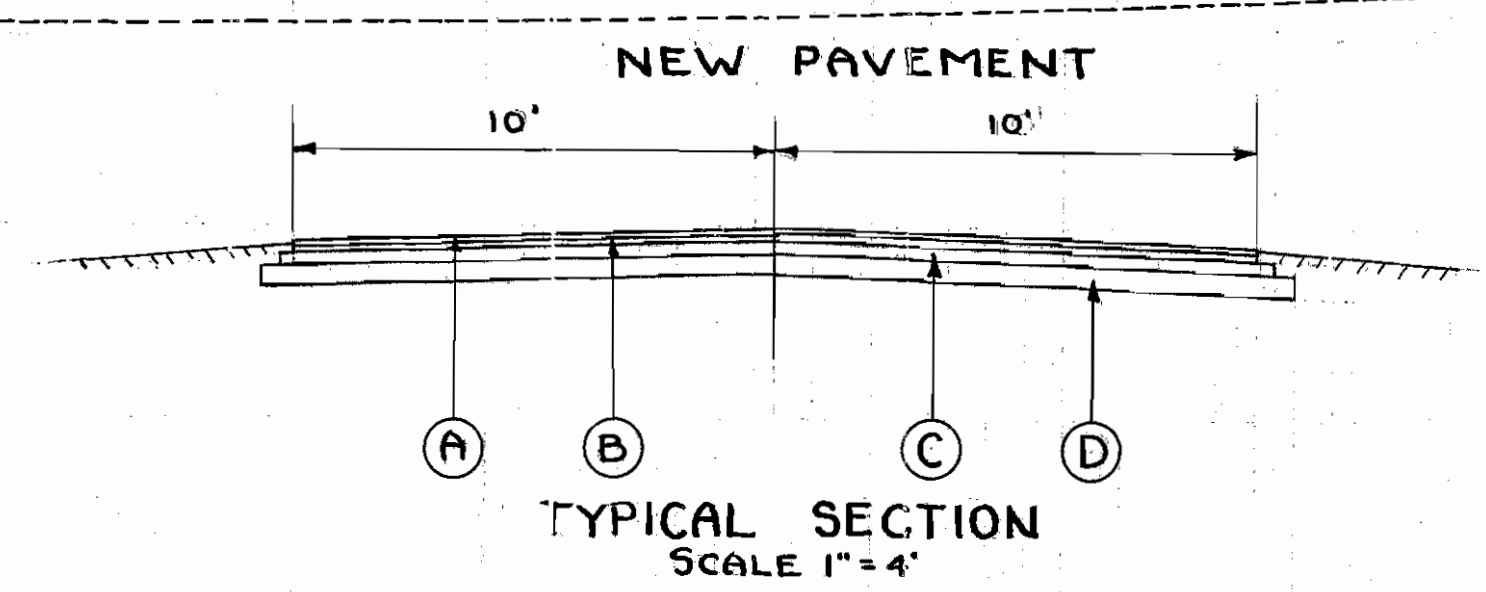
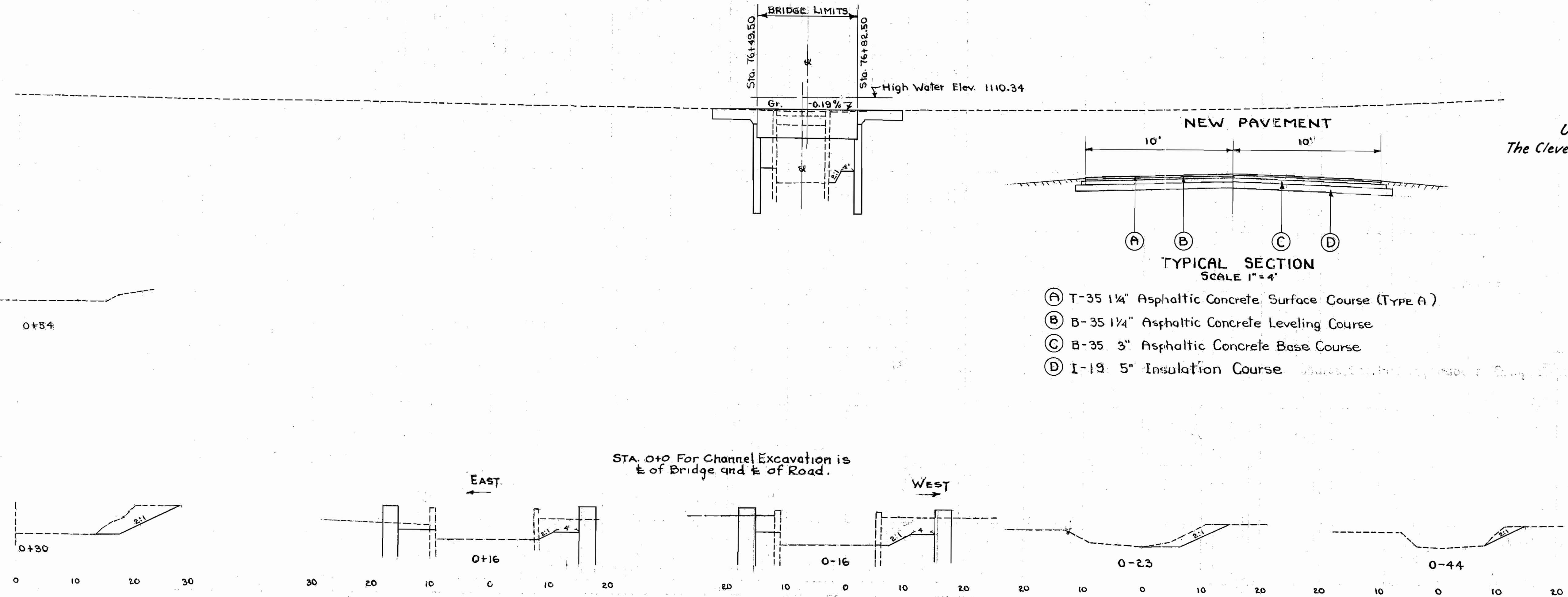
APPROACH SLABS	
LOCATION	Sq. Yds.
Sta. 76+34.5 to 76+49.5	33.3
Sta. 76+58.5 to 76+73.5	33.3
TOTAL	66.6

GUARDRAIL	
REFERENCE	Lin Ft.
G-1	21.00
G-2	21.00
G-3	21.00
G-4	21.00
TOTAL	84.00

1116
1112
1108

1120
1110
1100

1120
1110
1100



- (A) T-35 1 1/4" Asphaltic Concrete Surface Course (Type A)
- (B) B-35 1 1/4" Asphaltic Concrete Leveling Course
- (C) B-35 3" Asphaltic Concrete Base Course
- (D) I-19 5" Insulation Course

UTILITIES INVOLVED:-
The Cleveland Electric Illuminating Company

CHANNEL EXCAV.	
Sta.	SQ. FT.
0+54	0
0+30	25
0+16	21
0-16	41
0-23	15
0-44	6
0-48	0
TOTAL	76

GEAUGA COUNTY
GEA - 700 - (1.44X3.85)

ESTIMATED QUANTITIES							
Item	Total	Unit	Description	Abut.	Superstr.	Gen.	As Built
E-2	Lump	Sum	Cofferdams, cribs and sheeting			Lump	
E-2	93	cu.yd.	Unclassified excavation	93			
E-3	76	cu.yd.	Channel excavation			76	
S-1	68	cu.yd.	Class "C" concrete, superstructure		68		
S-1	45	cu.yd.	Class "C" concrete, abutments	45			
S-4	18,323	lbs.	Reinforcing steel	3943	14,313	67	
S-9	21	sq.ft.	1/4" premolded expansion joint filler		21		
S-14	66	lin.ft.	Railing, type I-15.13 with steel posts		66		
S-15	Lump	Sum	Temporary run-around bridge and approaches			Lump	
S-16	Lump	Sum	First test pile			Lump	
S-18	456	lin.ft.	12" cast-in-place reinforced concrete piling	456			3.9 459.9
S-24	Lump	Sum	Removal of existing structure			Lump	
S-29	3	cu.yd.	Porous drains on embankment slopes			3	
S-15	183	cu.yd.	T-10 surface course for run-around approaches			183	
S-15	4	tons	Chloride (M-10) for surface course of run-around approaches			4	

GENERAL NOTES

REFERENCE shall be made to Standard Drawing SB-1-47, revised 1-20-48.

REMOVAL OF EXISTING STRUCTURE: Superstructure shall be carefully removed and piled at the site for disposal by Geauga County. The remainder of the removed materials shall become the property of the Contractor. Rear abutment to be removed to bench elevation 1108.1. Forward abutment to be removed to flow line and finished slope line. Suitable waste masonry may be disposed of as bank protection at the direction of the Engineer.

PILING shall be driven to a minimum bearing capacity of 25 tons.

SURFACE FINISH OF CONCRETE: Fascia of deck slab shall receive a rubbed surface finish. All other exposed surfaces shall be governed by the provisions of Item S-1.

TEMPORARY RUN-AROUND BRIDGE AND APPROACHES: Bridge frequency rating, CF-130. T-10 surface course on approaches.

METAL WASHERS of approximately 3" diameter shall be provided on the anchor bolts, between the railing posts and the fascia of the deck, to hold the railing in accurate alignment. Washers shall be used only to the extent necessary for this purpose. The space between each railing post and the face of the concrete shall be thoroughly and neatly filled with "Leadite" or approved equivalent to exclude moisture. Payment for washers and filling shall be considered as included in the contract price per lin. ft. of railing. Bush-hammering of edge of deck as provided on Std. Dwg. SB-1-47 shall not be done.

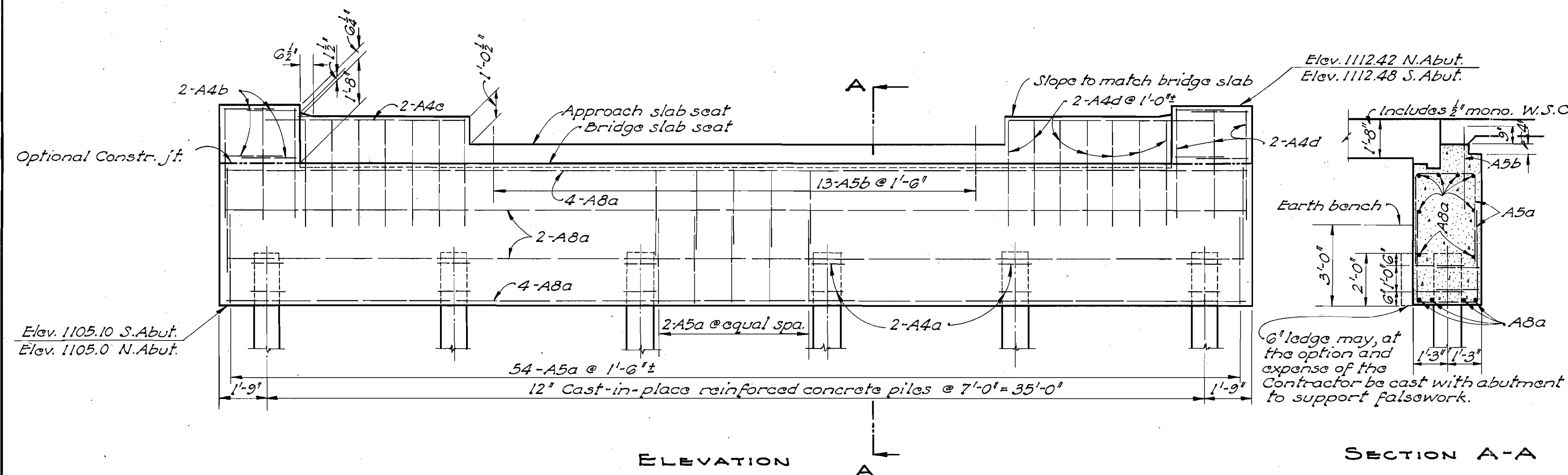
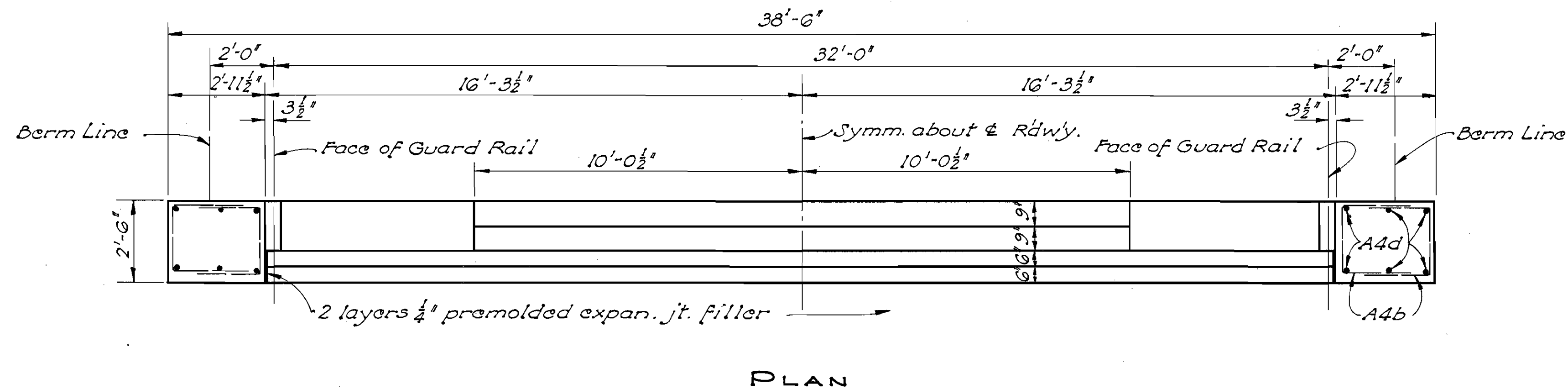
POROUS DRAINS: extending from face of abutment to Elev. 1107.0, shall be placed on and flush with embankment slopes at North abutment. The drains shall be 8 ft. wide at the low end, tapering to 5 ft. wide at face of abutment, and one ft. thick. They shall be centered under edge of deck. They shall be composed of No. 1 or No. 12 gravel, stone or slag. Construction procedure shall conform essentially to Item I-9. Trench excavation shall be included for payment with price per cu. yd. bid for "Porous drains on embankment slopes".

GENERAL PLAN

ELEVATION

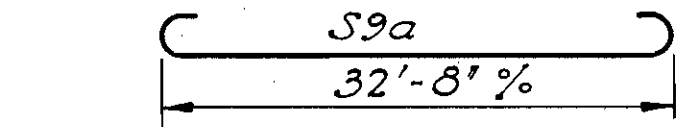
STATE OF OHIO DEPARTMENT OF HIGHWAYS BUREAU OF BRIDGES AND RAILROAD CROSSINGS							
GENERAL PLAN & ELEVATION, NOTES, & ESTIMATED QUANTITIES BRIDGE No. GE-700-14 over SAWYER BROOK							
Gauga County Sec. GEA-700-1.44 Sta. 76+66.00							
DESIGNED RHN	DRAWN RHN	TRACED JP	CHECKED RG	REVIEWED BFG	DATE 4-19-53	REVISED 5/1/53	

GEAUGA COUNTY
SEC. GE-700-(1.44)(3.85)

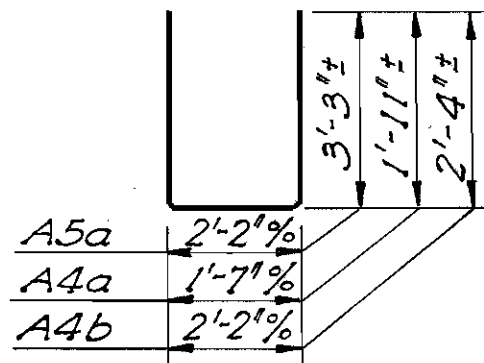


All reinforcing steel shall be 2" clear unless otherwise shown.

REINFORCING STEEL LIST					
Mark	Size	No.	Length	Weight	Shp
Superstructure					
S9a	1 1/8"	65	35'-2"	9834	B
T5a	3/4"	85	32'-2"	4106	S
T4a	5/8"	11	32'-6"	373	S
Abutments					
A8a	24	38'-2"		2445	S
A5a	108	8'-5"		948	B
A5b	26	3'-0"		81	S
A4a	48	5'-3"		168	B
A4b	16	6'-8"		71	B
A4d	80	3'-6"		187	S
A4c	8	8'-0"		43	S
Replacement Steel					
RE10	1	7'-3"		31	S
RE8	1	6'-6"		17	S
RE6	1	5'-10"		9	S
RE5	1	5'-7"		6	S
RE4	1	5'-3"		4	S



Note:
The bar size designations shown above do not correspond with the size designations given in the January 1953 edition of the Construction and Material Specifications.



Note:
In the reinforcing steel bar marks, the number following the first letter is the bar number which indicates the size of the bar.

STATE OF OHIO DEPARTMENT OF HIGHWAYS BUREAU OF BRIDGES AND RAILROAD CROSSINGS						
ABUTMENT DETAILS & REINFORCING STEEL LIST BRIDGE NO. GE-700-14 OVER SAWYER BROOK						
GEAUGA COUNTY STA. 76+00.00 SEC. GE-700-1.44						
DESIGNED	DRAWN	TRACED	CHECKED	REVIEWED	DATE	REVISION
RHN	RHN	JMS	R.G.	BFG	4-29-53	